

FIRST SUBDIVISION OF THE
COURTLANDT PALMER ESTATE

the Property of

THE DOBBS FERRY LAND & IMPROVEMENT CO.

situated at

DOBBS' FERRY, WESTCHESTER COUNTY,

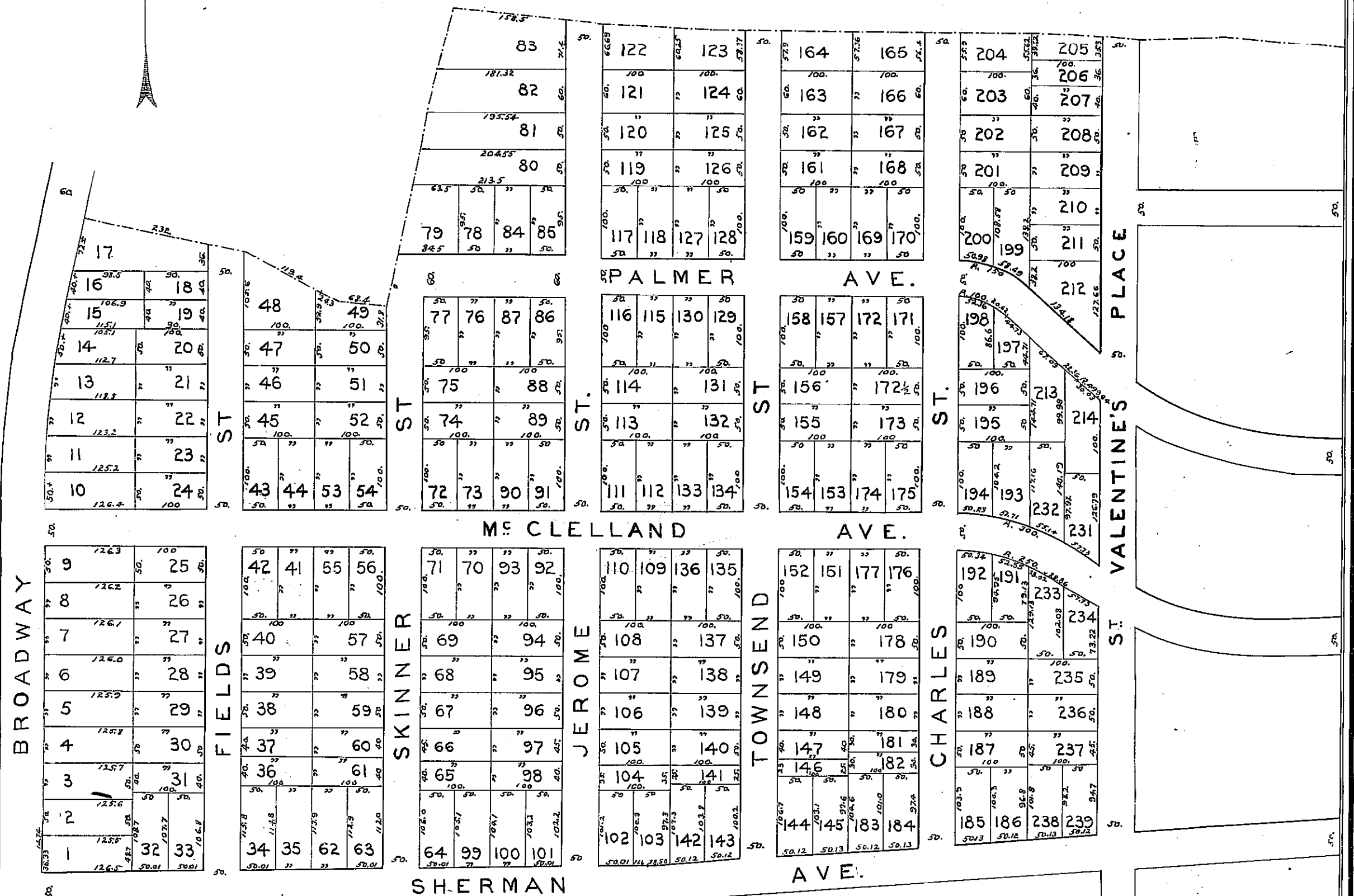
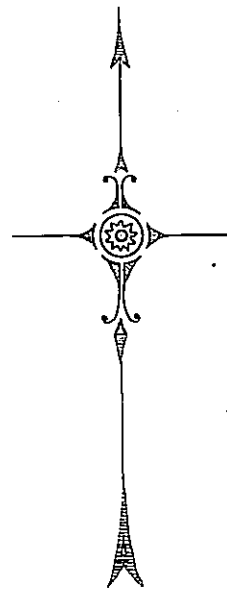
NEW YORK

SURVEYED BY
 M. LORINI
 YONKERS N.Y.

Filed in Westchester County
 Register's Office June 27th 1891
 John S. Horner Register

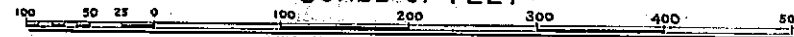
LAND OF CYRUS W FIELD

JUNE 20th 1891



LAND OF GEN. THOMAS

SCALE OF FEET



This is a copy of the original map
 filed in the office of the Register of
 Westchester County
 M. Lorini
 Register

M. LORINI C.E.
 YONKERS, N.Y.

NOTE - WHERE WORDS, LINES OR FIGURES ARE SHOWN IN RED
 THEY ARE MISSING ON THE FILED MAP

FILED MAP No 987